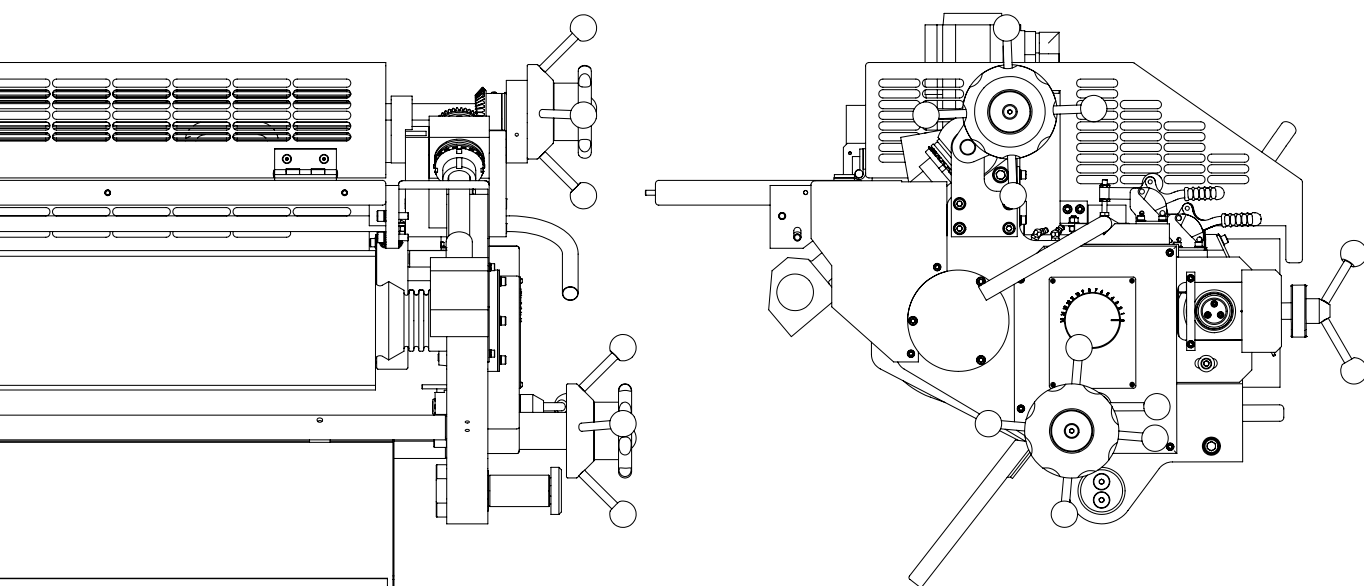


COATER UPGRADES

ENGINEERED PRODUCT SOLUTIONS



Upgrades & Spares

Upgrades

Crabtree applies decades of expertise to help your business grow through innovative upgrades and tailored solutions.

As the OEM, we have a wide range of bespoke upgrade paths for all of our machinery designed to enhance your production capabilities.

We are always open to developing new solutions, with support from our Technical and R&D department, please contact us to discuss how we can support you.



Spares

We manufacture all of our precision OEM components from our expansive site in Gateshead, UK.

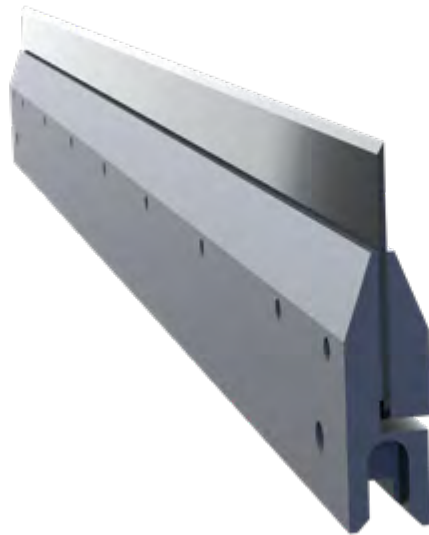
With over 30,000 specialist components in stock, we have quick turnaround for urgent spares, ensuring minimal downtime and uninterrupted operations.

- ~ OEM spare parts for all Crabtree products
- ~ Extensive stock for quick despatch
- ~ Full warranty on all parts



Scraper Blade Service

- ~ New OEM scraper blades for all of our coaters
- ~ Blade regrinds
- ~ All blades are fully inspected for defects



Quality Cylinders

Advances in manufacturing and inspection mean newly produced Crabtree cylinders have improved stiffness and extremely fine tolerances (sub 10 μ m), all of our cylinders are multi-stage inspected to ensure the highest quality.



Service Maintenance Contract

Contract Levels

LEVEL 1 Online support

LEVEL 2 1 visits per year

LEVEL 3 2 visits per year



Included

- ~ Free online support for the duration of the contract. Including online fault finding via modem where applicable.
- ~ Training for operators and maintenance personnel.
- ~ Audit of Crabtree equipment to highlight essential areas of concern.
- ~ Set Machine back to factory settings.
- ~ Planned preventive maintenance.
- ~ Advice on printing procedures.

Service Support

Backed by a global network of highly experienced service engineers, we make sure all of our Crabtree equipment runs smoothly.

We provide the following:

- ~ Installation of new Crabtree equipment
- ~ Onsite support and repairs, available worldwide
- ~ Full mechanical and electrical surveys
- ~ Upgrades and refurbishment for print optimisation
- ~ Targeted training for operators and maintenance personnel
- ~ Remote support and diagnostics



Contents

FC01	Pneumatic Clutch	6
FC02	Motorised Coating Head	7
FC03	Compact Drive	8
FC04	Independent Drive Delivery	9
FC05	Isoblade	10
FC06	Blade Grinder	11
FC07	Anilox Coating Head	12
FC08	Pneumatic Pump Conversion	13
FC09	Flexible Drive Conversion	14
FC10	Long Sheet Conversion	15
FC11	Infeed Air Clutch Conversion	16
FC12	Large Scroll Pattern Upgrade	17
FC13	Solvent Scraper	18
FC14	Lacquer Heater	19
FC15	Anti-Flecking System	20
FC16	Radial Application Roller Couplings	21
FC17	Electrical Upgrades	22

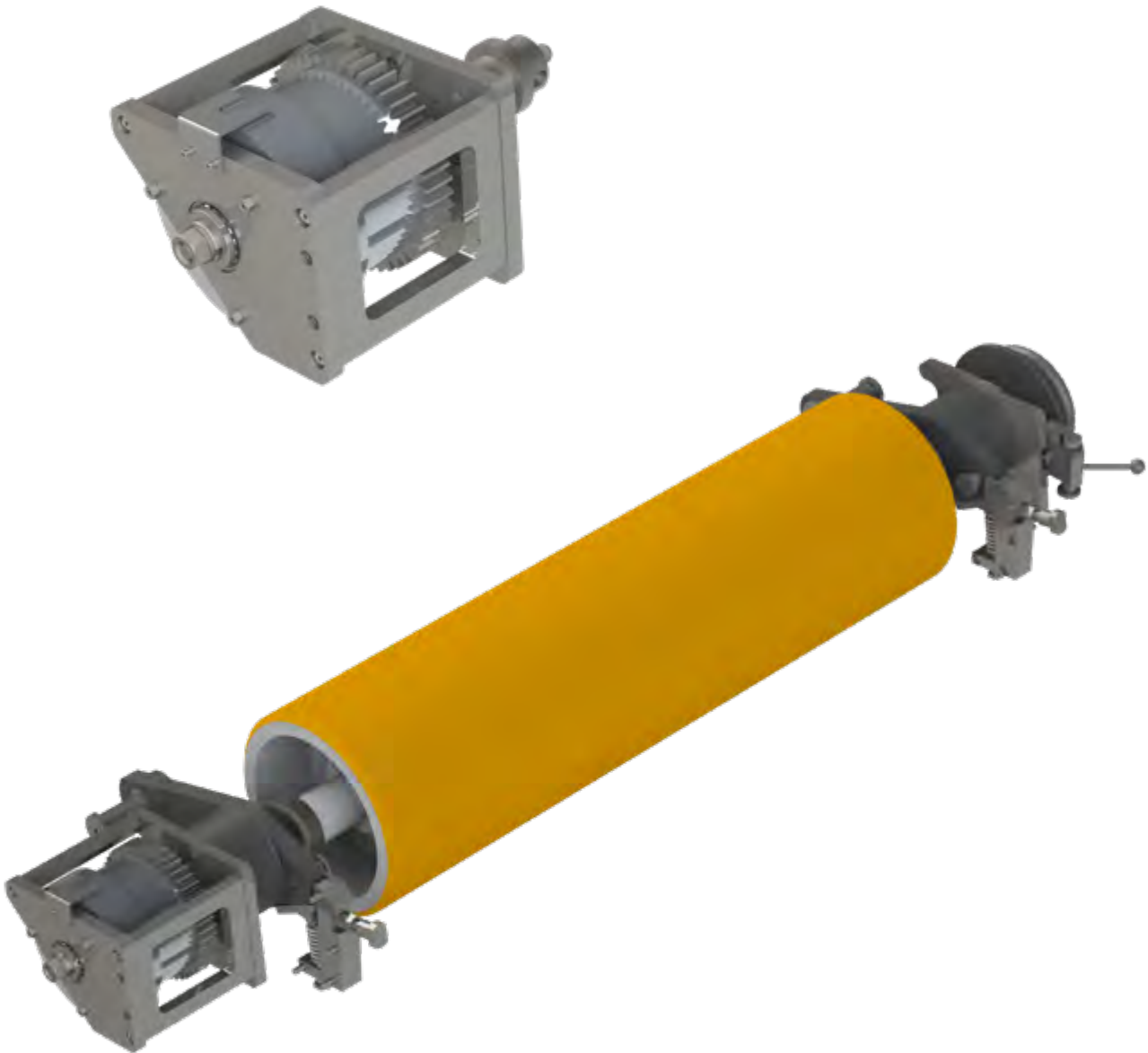
Application Roller Clutch

Features

- ~ Pneumatically disengages application roller position for setting
- ~ Allows fine circumferential adjustment
- ~ Switch on operator side for ease of access

Benefits

- ~ Quick make-ready time
- ~ Easy access for fine adjustment

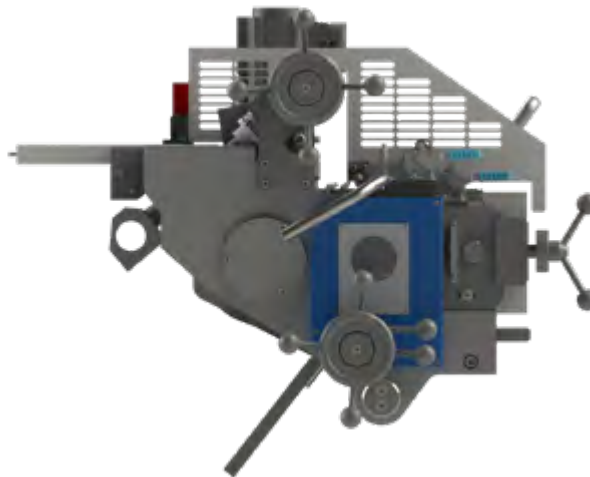
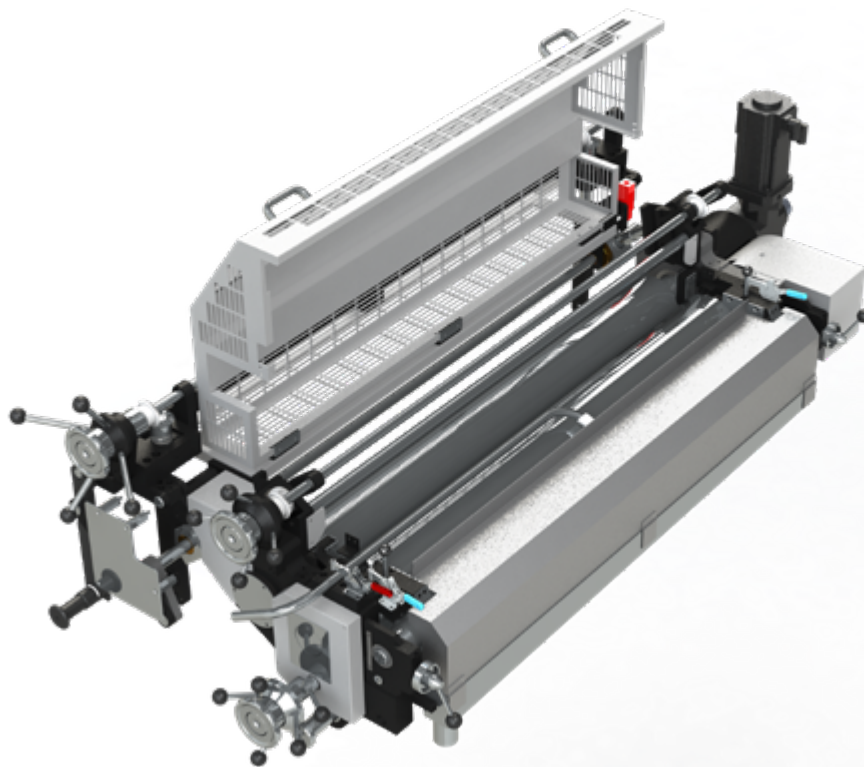


Features

- ~ Independently driven by a servo motor with accurate torque control mode
- ~ 3 roller system
- ~ Optional smoothing roller to prevent ghosting
- ~ Precise film weight adjustment

Benefits

- ~ Improved coating quality
- ~ No tools required for setting
- ~ Ease of operation
- ~ Removes the old bevel-flexi coupling arrangement



Features

- ~ Simple belt drive system to replace the original cast gearbox
- ~ Can be used in conjunction with a motorised coating head upgrade FC02

Benefits

- ~ Mechanically simple and easy to maintain
- ~ Removes a lot of wear components
- ~ Quite operation



Features

- ~ Independently driven delivery conveyor
- ~ Polychord 'round' belts
- ~ Fully Guarded
- ~ Larger work area
- ~ Available with gas spring or pneumatic lift option

Benefits

- ~ Mechanically simple and easy to maintain
- ~ Removes a lot of wear components – no meshing gear system
- ~ Easy to change Polychord belts
- ~ Safety guarded around the whole coater
- ~ Quiet operation



Isoblade Scraping System

Features

- ~ Blade contact force is uniform across length of roller
- ~ Contact force can be adjusted pneumatically
- ~ Quick change blade holder
- ~ Spare drip tray, blade and blade holder supplied

Benefits

- ~ Better scraping action
- ~ Even blade wear across the length of the roller
- ~ Longer blade life
- ~ Quicker bedding in time for blade
- ~ Reduced make-ready time
- ~ Negligible compression roller wear



Features

- ~ Cast iron machine bed
- ~ Manual down-feed grinding head
- ~ Tilting head to grind hollow surfaces
- ~ Carriage run guides covered with replaceable hardened steel guides
- ~ 90° rotating knife-mounting chuck
- ~ Coolant pump
- ~ Chain driven carriage
- ~ Supplied with stepped blocks to grind 4 overlapping planer blades simultaneously
- ~ Magnetic chuck
- ~ Adjustable feed rate
- ~ Quick change of the grinding wheel
- ~ Supplied with toolkit including spare grinding wheels, grinding stones and magnetic lifting handles

Benefits

- ~ Precision blade grinding
- ~ Reduced blade bedding in time
- ~ No overheating of blade tip during grinding



Anilox Coating Head

Features

- ~ Closed chamber, circumferentially sealed
- ~ Anilox rollers engraved with required cell pattern
- ~ Doctor blade for accurately wiping excess coating away
- ~ Unused coating is recirculated with each application to avoid waste
- ~ Quick release, precision roller couplings
- ~ Safety Guarded

Benefits

- ~ Precise and consistent coating film weight
- ~ Mechanically simple and easy to maintain
- ~ No setting required, reducing make-ready time



For replacing standard 3 roll coating heads, there is a motorised or mechanically driven option available

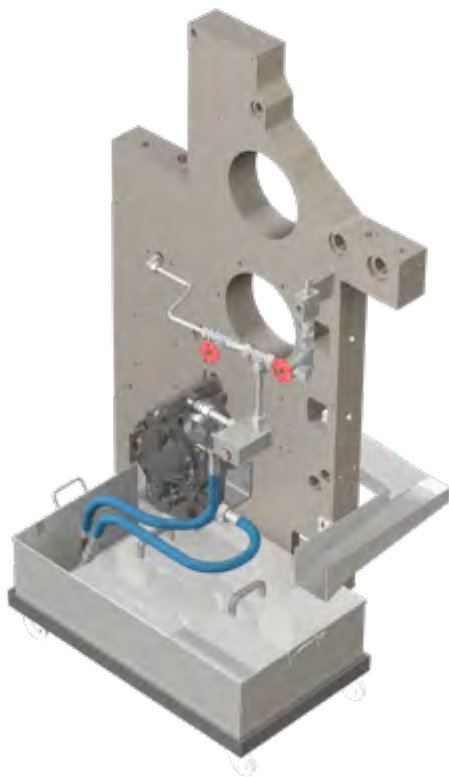


Features

- ~ Pneumatically operated
- ~ Adjustable flow control
- ~ Consistent feed of coating
- ~ Supplied with new pipework

Benefits

- ~ Adjustable
- ~ Reliable
- ~ Less foaming than conventional mechanical pumps

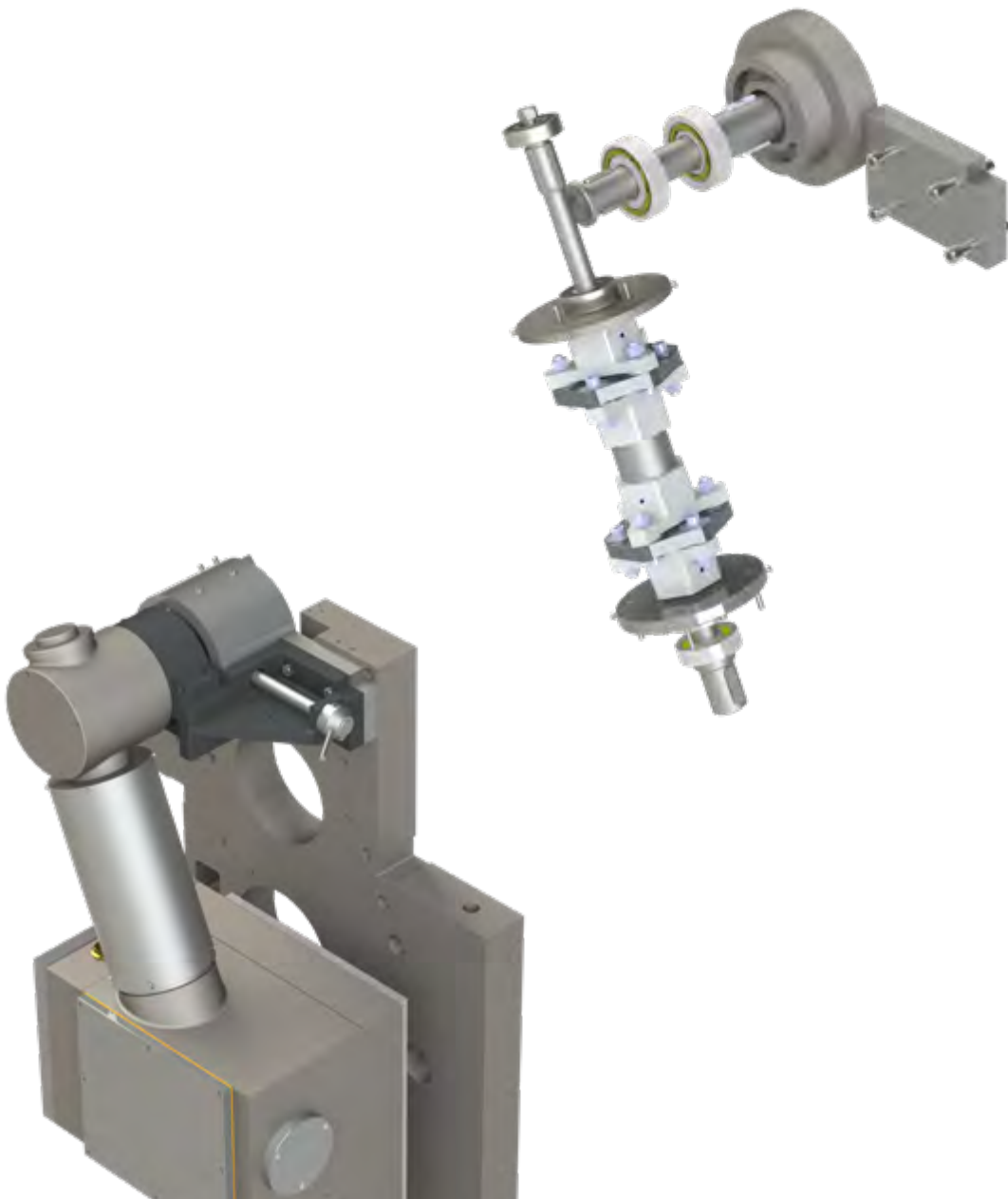


Features

- ~ Aligns main gearbox with top bevel gearbox for smoother operation
- ~ Rubber couplings to absorb misalignment and smooth drive transfer to coating head

Benefits

- ~ Improved coating quality
- ~ More reliable
- ~ Reduced maintenance

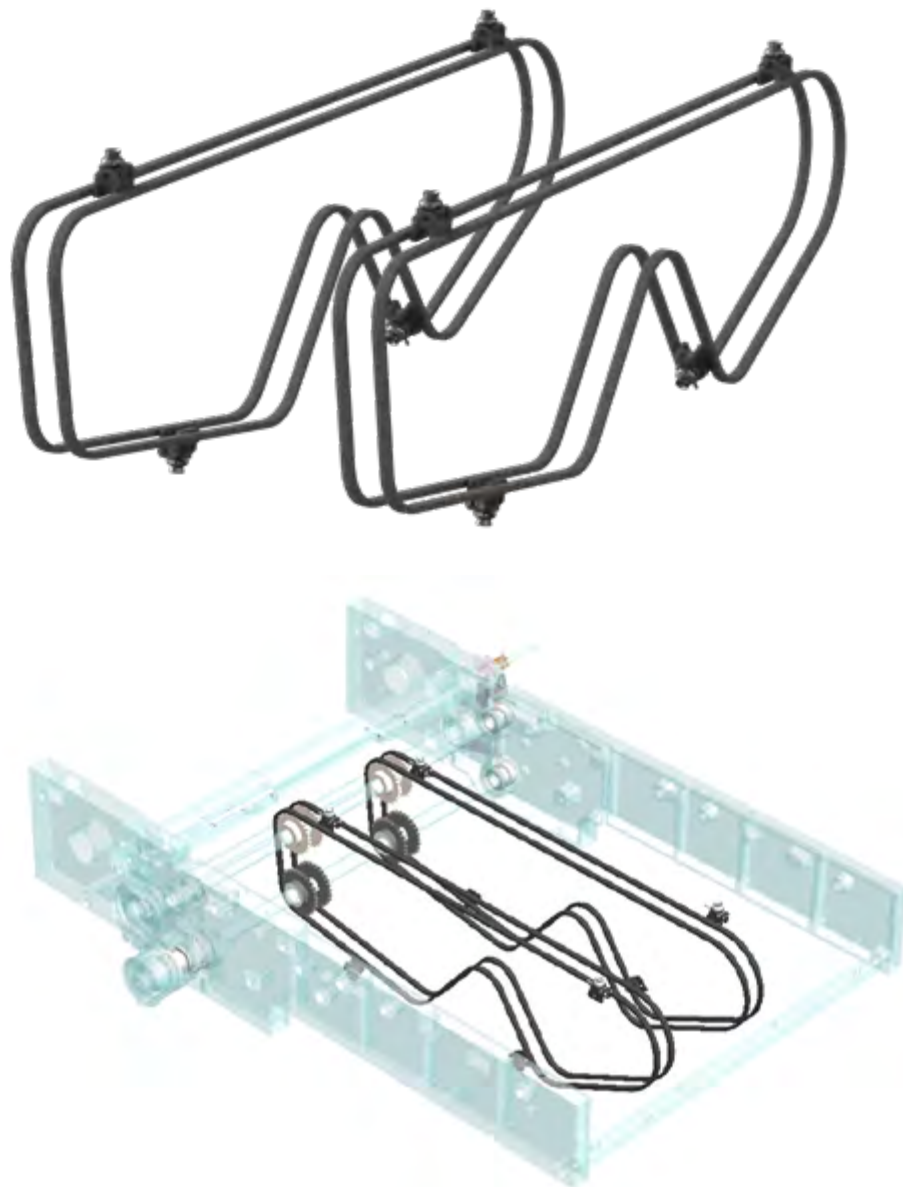


Features

- ~ For older 'F' Coaters - conversion to run sheets up to 1000mm long
- ~ Extended pusher chains and drive ratios adjusted for longer sheet
- ~ Tensioner arrangement modified to suit

Benefits

- ~ Allows running of sheets up to 1000mm long



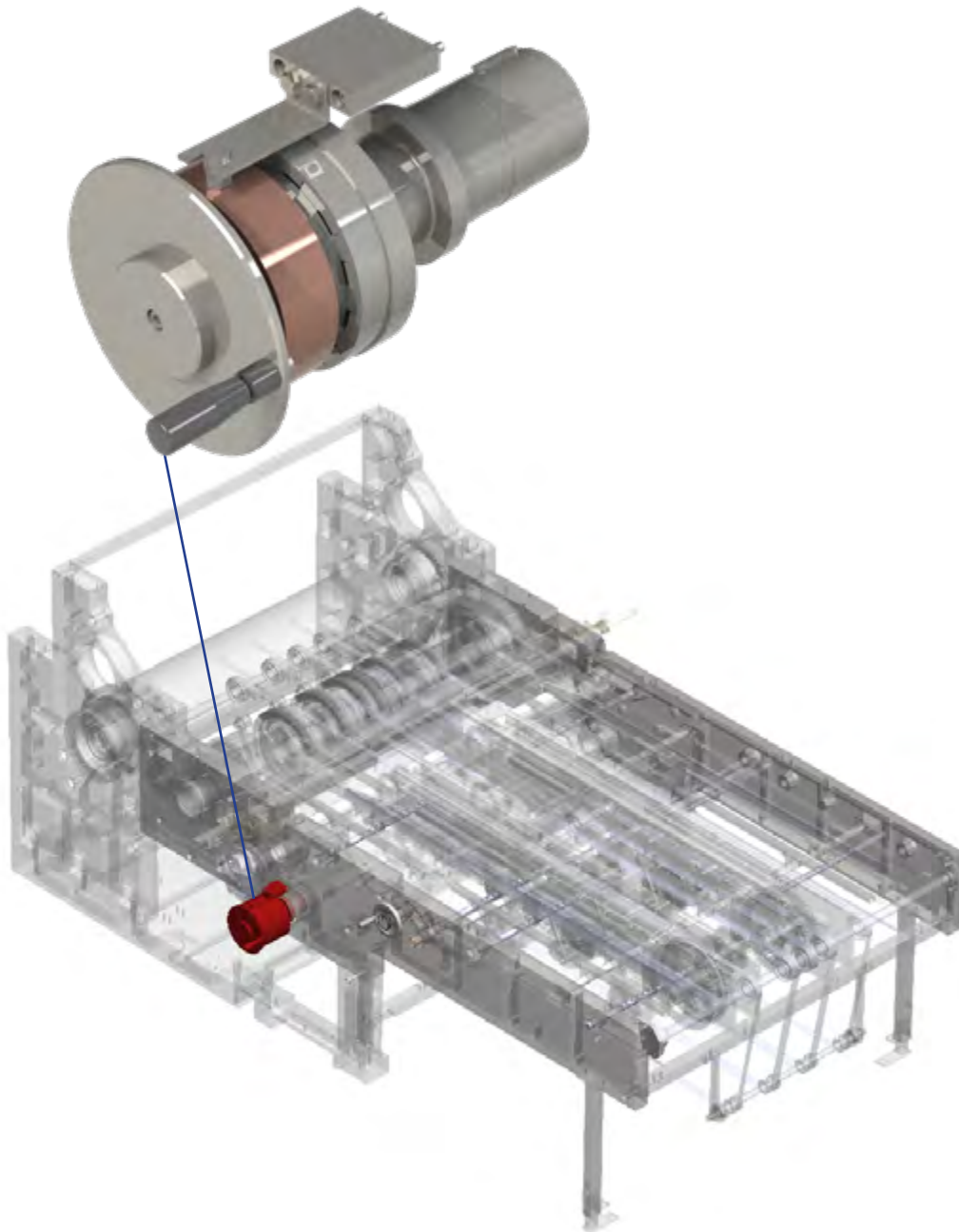
Infeed Air Clutch Conversion

Features

- ~ For older 'F' coaters
- ~ Pneumatically disengages infeed pushers from cam shaft
- ~ Allows pusher positioning adjustment for sheet size
- ~ Switch on operator side for ease of access

Benefits

- ~ Make-ready time reduced
- ~ Ease of operation

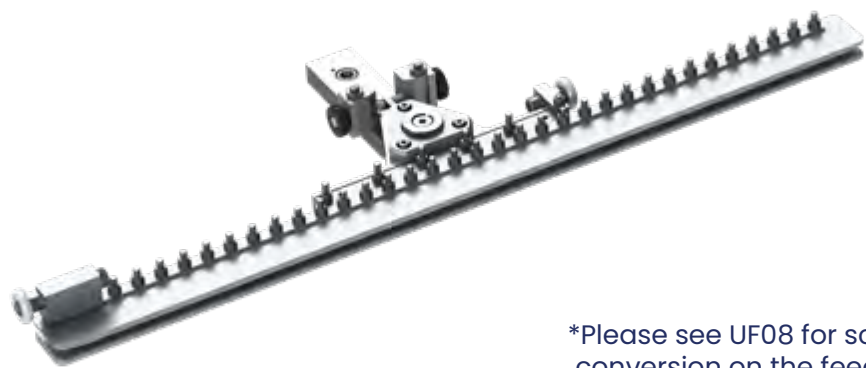


Features

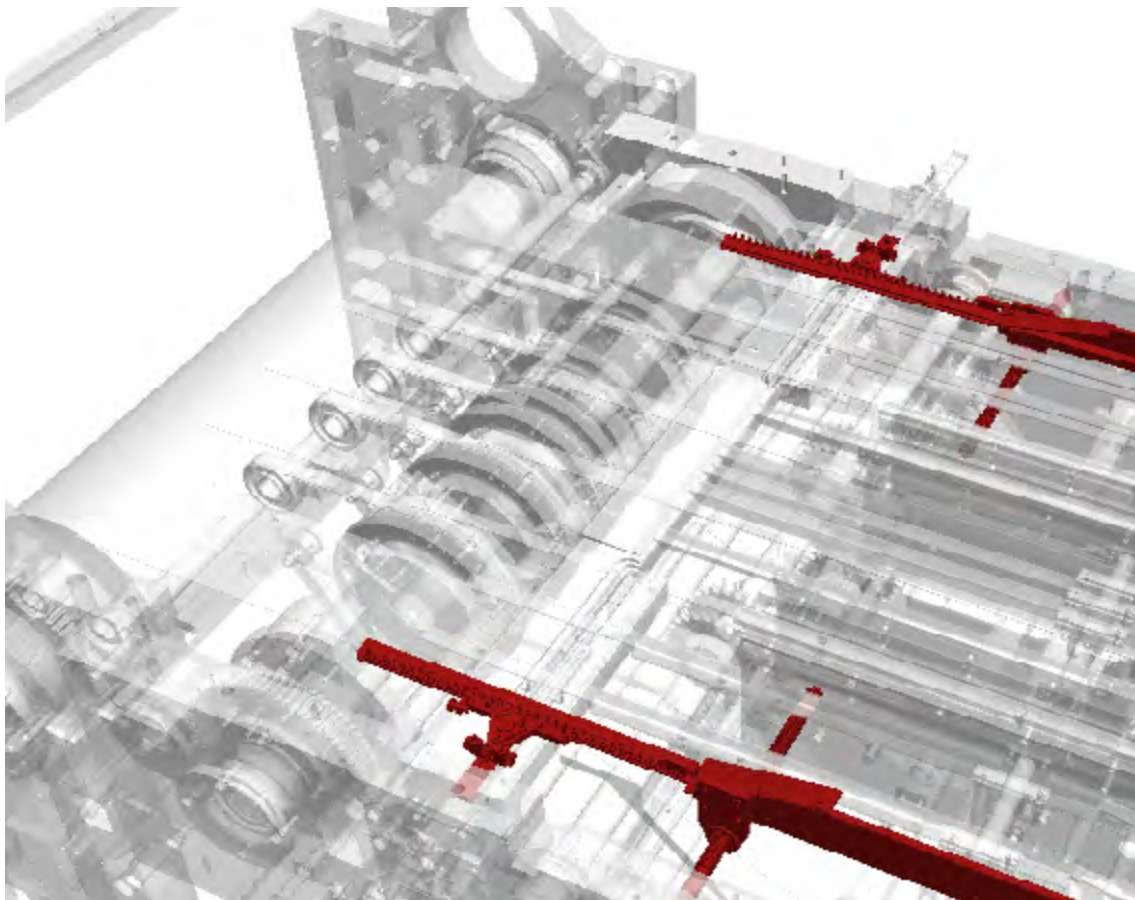
- ~ Larger width scroll sidelays
- ~ Suits larger scroll patterns up to [] width
- ~ Easy to set with articulating function for our-of square sheets
- ~ Scroll upgrade for the feeder included

Benefits

- ~ Increases coater flexibility
- ~ Also works on plain non-scroll sheets
- ~ Superior register



*Please see UF08 for scroll conversion on the feeder



Solvent Scraper

Features

- ~ Pneumatically controlled blade and engage/disengage
- ~ Slide out easy-access maintenance position
- ~ Solvent soaked felt for roller wiping
- ~ Pneumatic solvent pump
- ~ Scraper blade for excess diluted coating removal
- ~ Designed for high solid content white coatings

Benefits

- ~ Removes tough coatings with high solid content
- ~ Ensures no coating transfers to the back of the sheets
- ~ Longer primary blade life
- ~ Extends compression roller life
- ~ Less wastage

Available as a fully pneumatically controlled version or, depending on type of control system, electrically integrated and controllable from the touch screen HMI

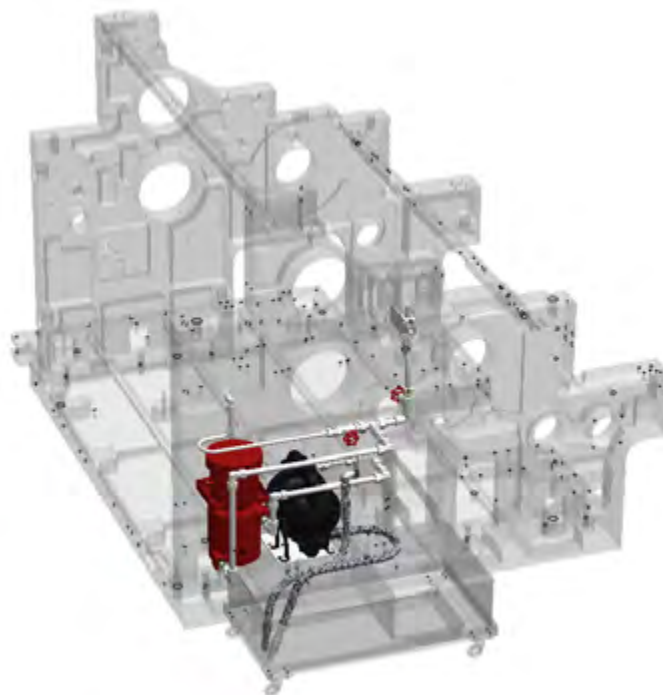


Features

- ~ Inline heater for coating lacquer
- ~ Easily adjustable via thermostat
- ~ ATEX version available on request

Benefits

- ~ Lowers viscosity of coating lacquer to improve flowrate
- ~ Improves coating adhesion to the sheet



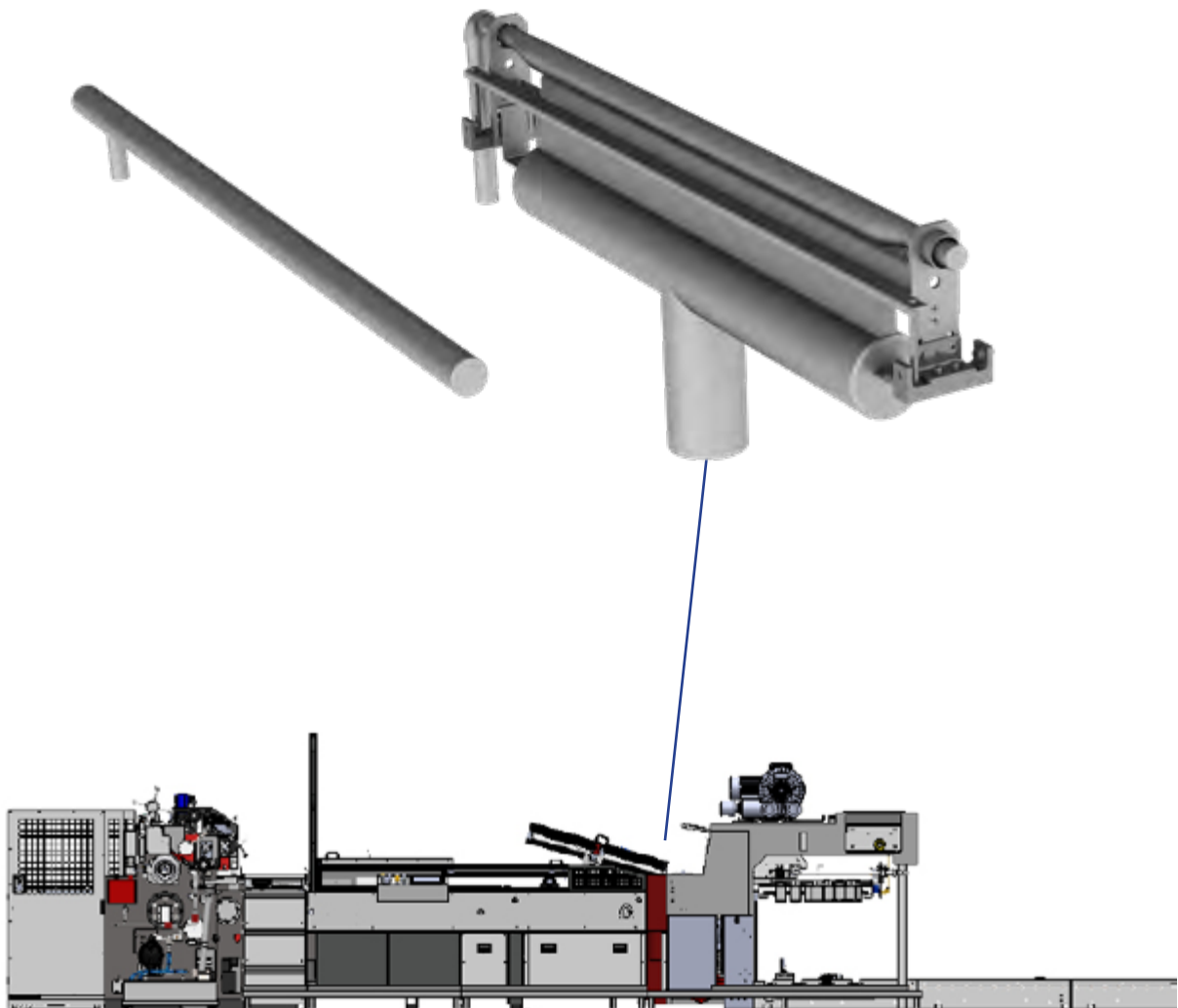
Anti-Flecking System

Features

- ~ Inline anti flecking system for treating virgin sheets prior to size coat
- ~ Fits between the feeder and coating line
- ~ Uniform flame across the sheet
- ~ Inline air bar
- ~ Coater changes (such as new sheet supports, reject tray and guading modifications), fit seamlessly and ensure correct machine operation

Benefits

- ~ Helps clean the sheet prior to coating, removes oil and grease
- ~ Improves coating adhesion and durability
- ~ Reduces spot marks on the sheet
- ~ Pre-warms the sheet
- ~ No hazardous emissions

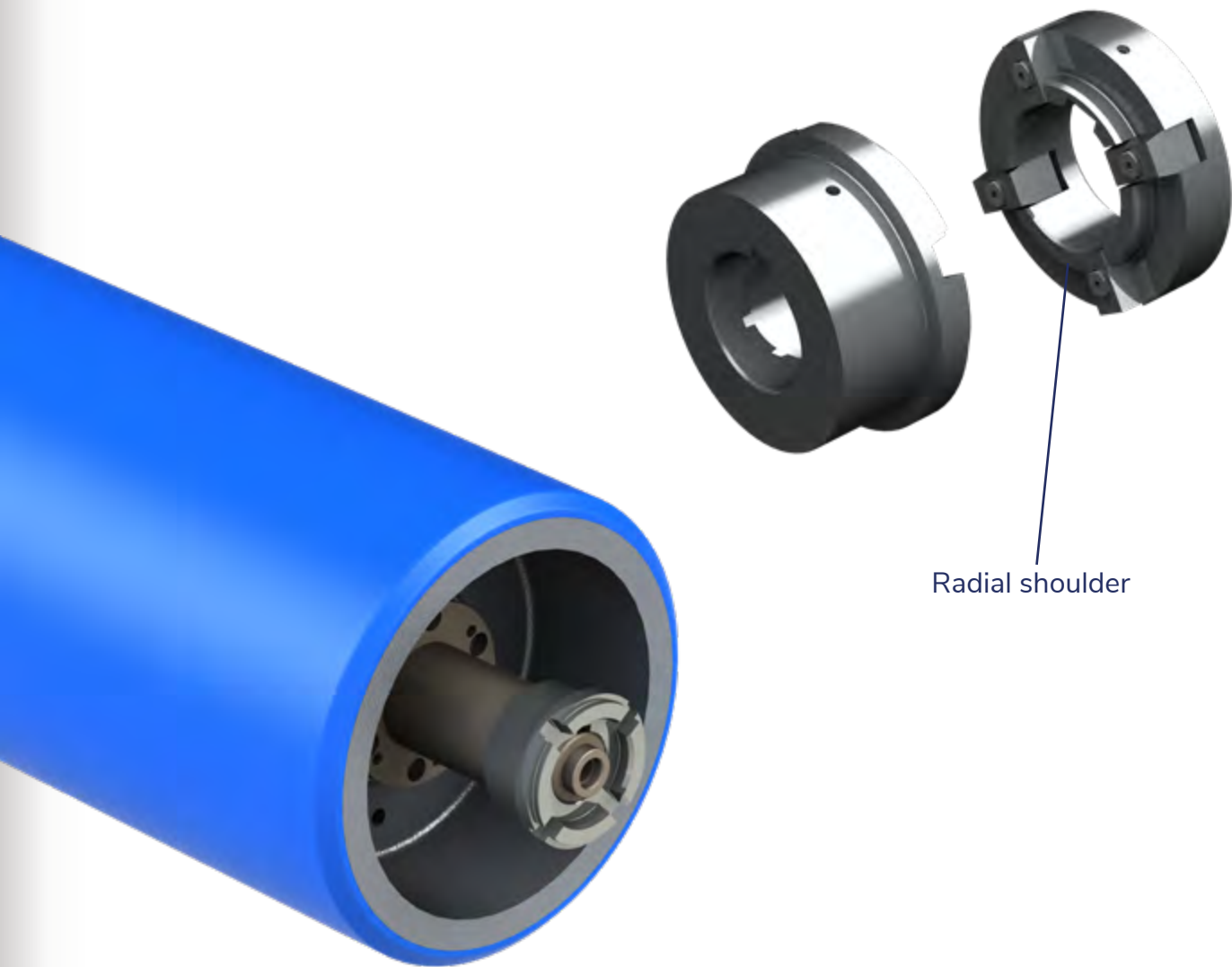


Features

- ~ Radially located application roller couplings
- ~ Lower radial runout of the application roller compared to traditional face-tooth couplings
- ~ Backlash free design
- ~ Interchangeable with existing face tooth couplings

Benefits

- ~ Helps prevent application roller bounce
- ~ Improves coating film weight lay down on the sheet



Electrical Upgrades

We are constantly improving our automation capability by using the latest state of the art control system technology.

We offer full electrical rewires to our equipment and all legacy control systems can be upgraded to enhance operational capability, including

- ~ Drives (DC and AC)
- ~ PLC's
- ~ CNC's
- ~ HMI's
- ~ Full rewires



Increased Operator Control

- ~ Mainline touch screen HMI operator console On the side of the coater
- Keeping up to date with the latest control system is essential**
- ~ Spares availability
 - ~ Future proofing the machine
 - ~ OEM support
 - ~ Increased performance
 - ~ Modem connection for online service support (see maintenance contracts)
 - ~ Industry 4 capability with customer specific advanced data capture technology



Case Study:

Saudi Arabian Packaging Industry (Sapin)

In 2024, Crabtree overhauled a 1983 F-Coating Line with a full electrical rewire and new PLC and HMI (plus other upgrades).

Customer statement:

~ The Crabtree team continued to deliver their outstanding capability & development in the metal decorating industry, by successfully upgrading and commissioning of Our Crabtree 1200 Coater which were installed in 1986. Our coater is now equipped with the latest synchronize drive coating head & electrical system upgrade. The production line performance has been restored and the operational capabilities has been enhanced whilst ensuring the most important aspect, the safe working environment of our employees! A project well delivered by Crabtree's technicians and remote support. A great thanks to Crabtree from the Sapin Operational and Engineering Team!

- Marthinus Chirstoffel Barnard (Printing Supervisor)



Book Your Free Online Consultation Today

We invite you to schedule a free online consultation to discuss your specific needs in the following areas:

- ~ New Machinery
- ~ Spare & Upgrades
- ~ Service & Maintenance
- ~ Technical & Operational Requirements

To book your consultation, please email: info@crabpress.co.uk

A member of our team will promptly arrange a convenient time for you.



Crabtree are dedicated to continuous improvement and therefore reserve the right to modify design features and technical specifications without notice

spares@crabpress.co.uk

+44 (0)191 487 5071